

LANDS Superabrasives Diamond Pellet (DP)

LANDS Superabrasives has developed a metal enclosed synthetic diamond (pellets). The diamond particle is fully surrounded by metal powder to be used in production of sintered tools.

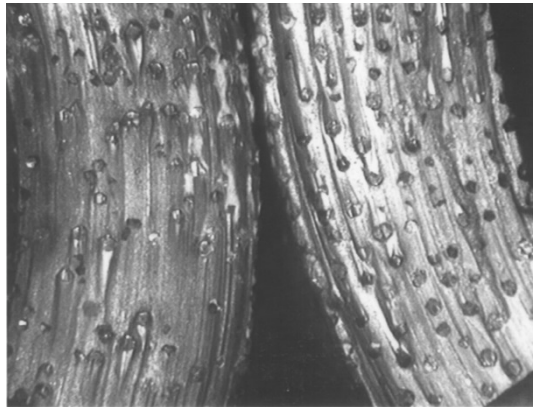
The technology developed by LANDS Superabrasives provides custom made pellets according to the customer requirements in order to achieve a homogenous distribution of synthetic diamond in the tool segment.

Lower pull-out of diamond crystals

Increased life of diamond crystal

Uniform distribution of diamond through-out the tool

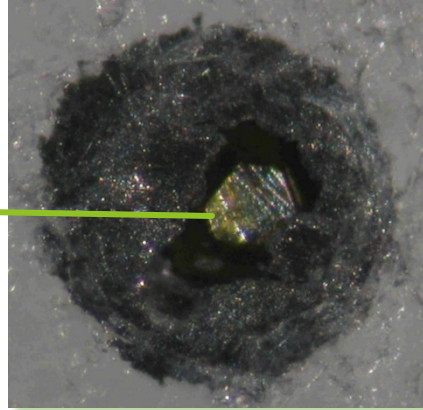
Longer tool life and improved cutting rate



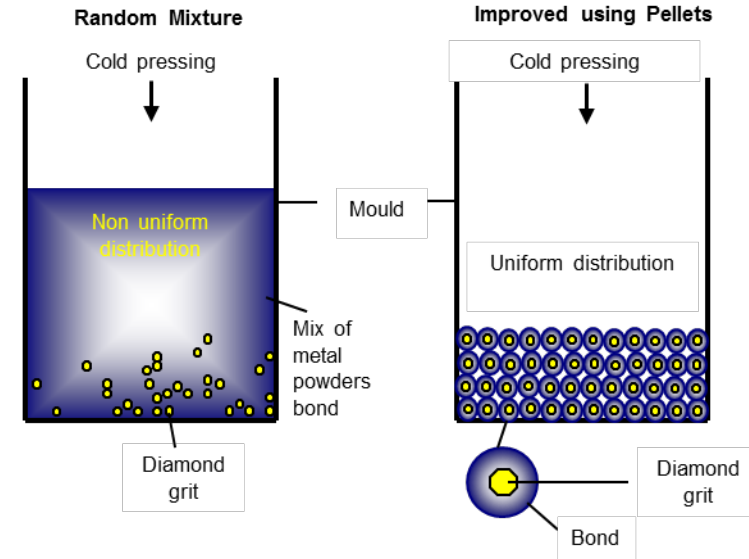
segment without pellets

segment with pellets

LANDS Superabrasives Diamond Pellet (DP)



Diamond Pellet (DP)



LANDS Superabrasives produces customized pellets made to your bond preference, diamond grade and concentration specification. LANDS diamond pellets are binder free and can directly be infiltrated and pressed in segments/tools.

Diamond pellets facilitate even and uniform distribution of diamond particles without costly placement machinery. The pelletization process is unique to your specific infiltration techniques and parameters.